

DIGITAL COMMISSION INFORMATION

Thank you for your interest in commissioning me to create something special and unique for you!

I have been creating custom pieces for clients for the past ten years. If you have a space that you are wanting something to add that personal touch to or simply want a custom piece with a particular concept in mind, I work with you to help bring your vision to life.

If you are interested in securing a commission, please read through the following information. Please do not hesitate to contact me regarding anything in this package. I would be happy to answer any questions you may have!

CONTACT INFORMATION:

- Website: www.artofnichelle.art/commissions
- Email: artofnichelle@gmail.com
or through [Direct Message](#) only on these Social Media platforms:
- Facebook: www.facebook.com/artofnichelle
- Instagram: www.instagram.com/art.of.nichelle

MY WORK

I will draw landscapes, cartoon or realism, portraits, official characters, real people, fictional characters, mild gore (minor blood and wounds), and mild nudity.

Things I will not draw are exaggerated gore, mecha, furrries, offensive or political art, NSFW, or topics related to political propaganda, hate, racism, sexual assault, etc.

WHAT TO EXPECT

Commissions are accepted on a first come, first served basis unless otherwise negotiated.

Once I confirm the acceptance of your commission, I will send a preliminary sketch based on what has been requested and will do minor revisions following your review. A deposit of 50% of the negotiated fee will be required prior to continuing the commission. The final image will be released to you following receipt of full payment.

I will own the copyright of the artwork(s), and have the right to redistribute them for other, non-commercial purposes (portfolio, commission examples etc). I will not claim copyright of the commissioned character design(s).

All commissions are intended for personal use only. The Client is not permitted to make any profit from the artwork(s) unless previously negotiated. Third parties are not allowed to use the final product for any promotional or commercial projects without the express written consent from both myself and the client.

The following prices are purely for planning purposes only. The final price may vary depending on, but not limited to, size, complexity, and requested timeline for delivery. The final fee will be negotiated with the Client prior to the commencement of any work. All additional work and/or major revisions requested on a commission will result in extra fees.

There are no refunds on commissioned work. In the rare event that I cannot complete a commission, the Client will have the option of either a refund of the deposit **or** a copy of the piece as it is.

As a standard, all commissions will be provided on a solid colour or two-tone gradient background unless otherwise negotiated.

Commissions will take up to 3 weeks for completion unless an alternate timeline has been negotiated or quoted by me. Art takes time, so I kindly ask for patience as I complete each unique piece!

All fees are quoted in CAD. Payments are accepted via PayPal or eTransfer.

I reserve the right to decline commissions without question.

By commissioning me, you are agreeing to the terms and conditions stated above.

HOW TO ORDER

You can contact me directly through any of the methods listed on page one of this package. To ensure a timely response, please use my Art of Nichelle contact platforms previously listed. ***I will only respond to commission requests through email or direct message. If you ask for a commission in a comment on a Social Media platform, I will not recognize it as a request.***

The following is the information required in your commission request:

- **Email:** This will be the formal communication channel and required to confirm the acceptance of the commission, the negotiated fee, the invoice and your final bill of sale.
- **Commission Type:**
 - Landscape or Portraiture
 - Size of portraiture (bust, waist, or full)
 - Sketch or rendered
 - Background (standard solid or two-tone gradient background), etc.
- **Additional Information:** Any add-ons (extra characters, props, accessories, style of clothing, etc.).
- **Image References:** Images or links you would like me to use as a reference for your commission (characters, colours, poses, works of mine that you would like your commission to be similar to, etc). ***If you are unable to provide image references written descriptions need to be as detailed as possible.***
- **Payment Method:** PayPal or eTransfer; If you are using PayPal, please include your PayPal email for the invoice.

DIGITAL COMMISSION INFO CONT.

PRICE LIST

All prices are listed in Canadian Dollars (\$). The following fees are strictly for planning purposes only and the final price may vary depending on and requested timeline for delivery. If you wish to commission something I have not included in my sample pricing, please feel free to inquire about it.

	Sketch / Lineart	Simple Colour Sketch	Full Colour Render
Bust Up Portrait	\$35	\$45	\$60
Waist Up Portrait	\$50	\$65	\$80
Full Body Portrait	\$70	\$90	\$120
Landscape / Environment*	\$80	\$100	\$150

*landscape / environment pieces are quoted based on the request.

Additional features for commission are priced as followed:

- +50% per additional character per piece (ex. Bust up sketch of a couple: \$35 + \$17.50 = \$52.50)
- +25-50% for backgrounds beyond the standard solid or two-tone gradient; percentage quoted dependent on complexity
- +10% for detailed / complex props, accessories, or clothing

Thank you for your consideration. I hope that this package provides you the information you need for me to create that special piece, just for you!

Yours in design,

Michelle

SAMPLES OF MY WORK

The following is a small selection of my works. To see more examples, please visit my Instagram and Facebook pages for the most comprehensive collections!



Bust Up Portraits

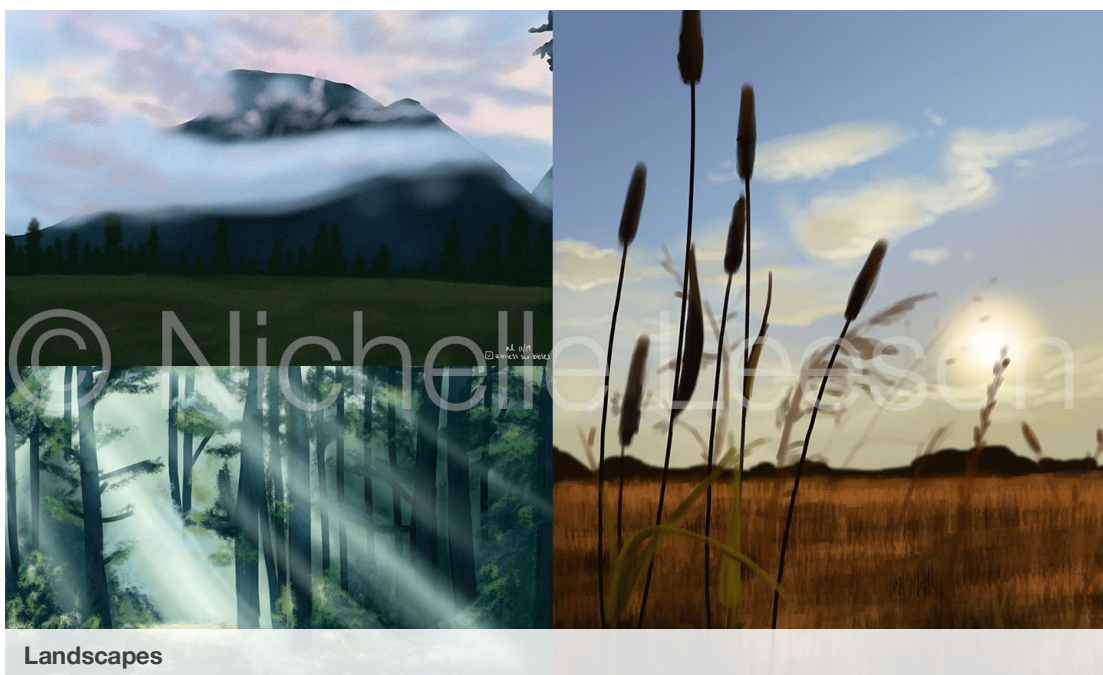
DIGITAL
COMMISSION
INFO CONT.



DIGITAL
COMMISSION
INFO CONT.



Fully Body Portraits



Landscapes